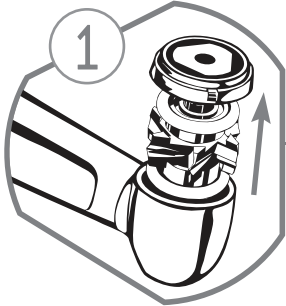


**IMPORTANT:** Prior to installing the ProDrive turbine, carefully examine the handpiece head to ensure that it is free of dents and/or excessive wear. Do not attempt to install a ProDrive turbine when there is visual damage to the handpiece head.

ProDrive Systems will not be held liable for damages that result from improper turbine installation. ProDrive turbines are intended for dentistry purposes only. Any form of misuse or modification is strictly prohibited.

For additional information, please contact your Dealer Technician or ProDrive Customer Service at **1.866.937.8882**

Visit [www.prodrivesystems.com/turbineassembly](http://www.prodrivesystems.com/turbineassembly) for complete turbine assembly instructions per model.

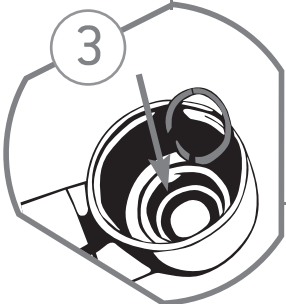
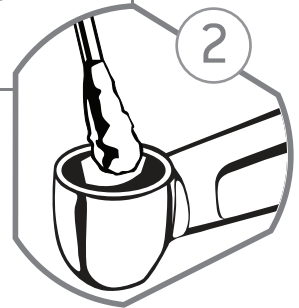


### REMOVE BACK CAP AND TURBINE

1. Remove back cap (either push button or lever) from handpiece using the appropriate wrench.
2. Remove turbine and using an explorer, remove any parts that may be left in the head.

### CLEANING

1. Using a Q-tip soaked in isopropyl alcohol (or equivalent), clean the inside of the handpiece head removing any dirt or debris from head.
2. Visually inspect handpiece head to ensure no parts or materials remain in the head.
3. Connect handpiece to airline and operate foot pedal to clear any debris remaining in the drive air tube.
4. Disconnect handpiece from airline.

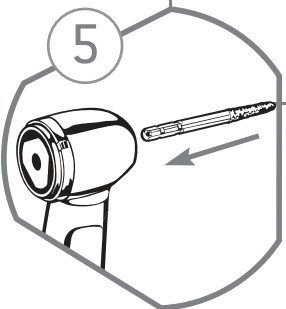
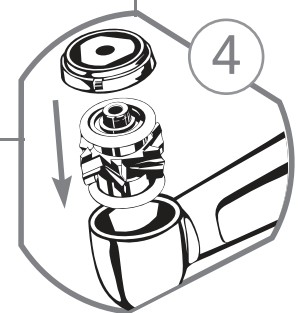


### INSTALL O-RING(S), WASHER, AND/OR SPACER

1. Install O-ring(s), washer, and/or spacer into the handpiece or back cap.  
NOTE: If unsure of proper installation location, contact a qualified ProDrive DEALER technician for assistance.

### PRODRIVE TURBINE AND BACK CAP INSTALLATION

1. Place the ProDrive turbine into the handpiece ensuring that it is seated properly.  
NOTE: MidWest Quiet Air: Seat the turbine into the back cap before installing into handpiece.
2. Screw the new ProDrive back cap on finger tight.



### INSERT A PRODRIVE BUR

1. Insert a ProDrive bur and ensure that the turbine is spinning freely inside the head of the handpiece.  
NOTE: Tug the bur side to side to help ensure the turbine assembly is seated properly.
2. Tighten the back cap with the appropriate wrench.
3. Retest to ensure that the turbine spins freely and easily.

### TURBINE BREAK-IN

1. Lubricate the handpiece per manufacturer instructions.
2. Connect handpiece to coupler and operate foot pedal at half speed for 15 to 30 seconds.
3. Fully depress foot pedal, and operate for an additional 30 seconds.
4. Perform a cut test to ensure proper operation.

